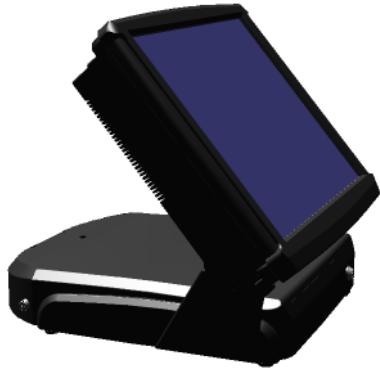


# TOUCH DYNAMIC

CobraPOS 370/478 All-in-One  
888.508.6824



[click to activate viewport](#)

The CobraPOS 478 and the CobraPOS 370 are Touch Dynamic's state of the art All-in-One Systems. The CobraPOS 478 is a Pentium IV class system and the CobraPOS 370 is a Pentium III class system. Both products feature a unique heat pipe cooling system and are extremely feature rich. The CobraPOS product line offers 3 Powered Serial Ports, 4 USB, 1 LPT, 24 volt Printer Power Port and much more. The CobraPOS has the look you desire and the reliability you need.

[WWW.TOUCHDYNAMIC.COM](http://WWW.TOUCHDYNAMIC.COM)

## HIGHLIGHTS

- 3 serial ports, powered
- 2 powered USB 2.0 ports in rear
- 2 USB 2.0 ports in front
- 24 Volt Printer Power Supply port
- Speed and Reliability in a POS Terminal

## OPTIONAL

- Wireless LAN
- Pole Display or Dual LCD
- Internal CDROM, CDRW/DVD or DVDRW
- Digital Persona Fingerprint Reader

## FEATURES

- Heat Pipe Cooling
- 250W Power Supply
- 15" Bright LCD w/0°-90° viewing angle
- 10/100 Intel LAN (478 only)
- Intel Chipset (478 only)
- VESA Wall Mountable

## TARGET MARKETS

- Hospitality P.O.S.
- Retail P.O.S
- Medical
- Kiosk
- Gaming

**Touch Dynamic, Inc**  
**970A New Brunswick Ave.**  
**Rahway, NJ 07065**  
**888.508.6824**

SPECIFICATIONS	CobraPOS 370	CobraPOS 478
Touch Screen	Fujitsu Resistive	ELO Resistive
LCD Specification	15" TFT LCD Panel Display	
Resolution	Max 1024x768 pixel	
Monitor Adjustment Angle	0° - 90°	
CPU	Intel Celeron 1.2Ghz socket 370	Intel P4 CPU up to 3.0Ghz / Celeron up to 2.8Ghz socket 478
Memory Module	184 pin DDR x 2 up to 2GB (DDR400)	
BIOS	Award BIOS with enhanced ACPI 1.0 / PnP/ APM/ DMI/ ESCD/ PCI bus 2.1 / On Now/ DRAM ECC	
Chipset	North Bridge VIA CLE266, South Bridge VIA8235	North Bridge Intel 865GV, South Bridge Intel ICH5
Parallel Port	One LPT port (SPP/ EPP/ ECP) IRQ and address selected by BIOS setup	
Serial Port	COM1, COM2, COM3, COM4 on Board. IRQ selected by BIOS setup (jumper-less) and DC 0/ 5/ 12V output on pin 9 by jumper selector	
AGP 3D Graphics	VIA AGP4X graphics core, share memory from 8MB up to 64MB support 2D/3D graphics accelerator.	Intel 865GV AGP, Share memory from 8MB up to 96MB (DVMT*)
HDD	3.5" HDD (Optional 2 x 2.5" HDD KIT), 40GB standard	
CD-ROM (optional)	Slim type 24X CD-ROM, CDRW/DVD or DVDRW	
USB	4 USB ports support WIN98/2000/XP. (Two USB ports located at front panel, two powered USB ports located in rear panel)	
Enhance PCI IDE	On Board PCI Bus Master IDE 1/2 Support Ultra DMA 66/100/133	
Ethernet Port	Realtek RTL8100B Ethernet chip on board.	Intel 86562E Ethernet Chip on Board (10/100 Base T)
Audio Port	VIA VT1612A AC97 CODEC on board, line in, out	Realtek ALC203 AC97 CODEC on Board
PS/2 Keyboard Port	PS/2 Type	
PS/2 Mouse Port	PS/2 Type	
Front Panel	ATX power switch, Reset Button, PS/2 Mouse port, 4 LED Indicators: (Stand by, Power on/off, HDD State, LAN Status), CF Flash memory type I/II Socket, 2 USB 2.0 Ports, Audio for MIC in, Slim type CD-ROM, Door with Key lock	
Rear Panel	AC main power switch, PS/2 Keyboard Port, DC 12V output for LCD Monitor, DC 24V output for POS printer, COM 1/3/4 DB9-pin output ports, LPT D-SUB 25-pin output port, RJ-45 Ethernet output port, 2 Powered USB 2.0 ports, Two 12/24V selectable port for Cash Drawer driving, Parallel Port	
Speakers	2 internal 2 watt speakers	
Thermal Solution	One low noise 60mm FAN (magnetic levitation) for CPU heat pipe, One FAN for North Bridge chip, One low noise 60mm FAN for internal PSU	
AC Power Supply	ATX 250W internal PSU (UL, CSA, VDE) AC 90 to 264V, 50/60Hz	
Product Size	14in X 13.7in x 13.3in	
Package Size	19in (L) x 18in (W) x 11.5in(H)	
Weight	23lbs	
Compatibility OS	DOS/OS2 V2.1/SCO XENIX V2.3.2/SCO UNIX V3.2/NOVELL/WIN3.1/95/98/2000/XP/NT4	
Operation Temperature	0°C to 40°C (Without HDD up to 50°C)	

